

50mm LONG PHOSPHER BRONZE OR BRASS M10 BOLT
 FURSE FCT 5010 COMPRESSION CONNECTOR

BN105 "B" BOND

40 x 25 x 20 THK LUG EXTENSION TO 95 x 95 x 20 THK ANCHOR PLATE

SPRING WASHER

PHOSPHER BRONZE OR BRASS M10 NUT

TYPICAL B BOND ASSEMBLY CONNECTION

FURSE TYPE GUV ROD TO CABLE CLAMP

ALL CONNECTING SURFACES (FURSE CONNECTOR, EARTH ROD, CABLE, NUT AND BOLT) TO BE COATED WITH OXIDE INHIBITING COMPOUND PRIOR TO CONNECTING. TIGHTENING TORQUE TO BE 12Nm (BS EN 50164-1:2000) FOLLOWING TIGHTENING OF ALL BOLTS, CONNECTION AREA SHOWN SHADED TO BE WRAPPED IN DENSO TAPE

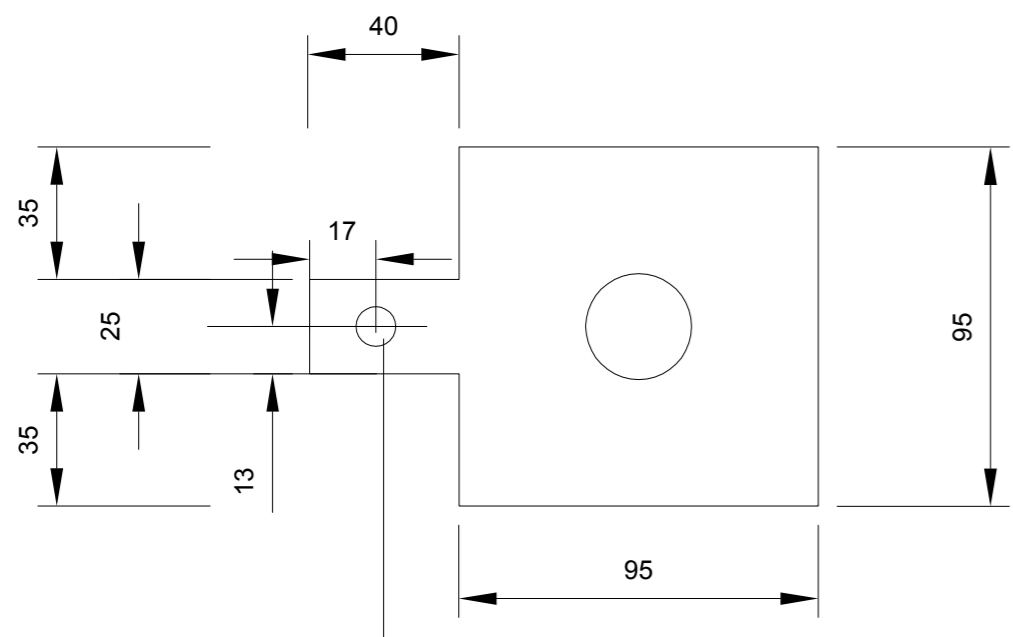
DETAIL "B" CABLE TO EARTH ROD CONNECTION

SEE DETAIL "D"

10.5mm Ø HOLE IN 40 x 25 ANCHOR PLATE

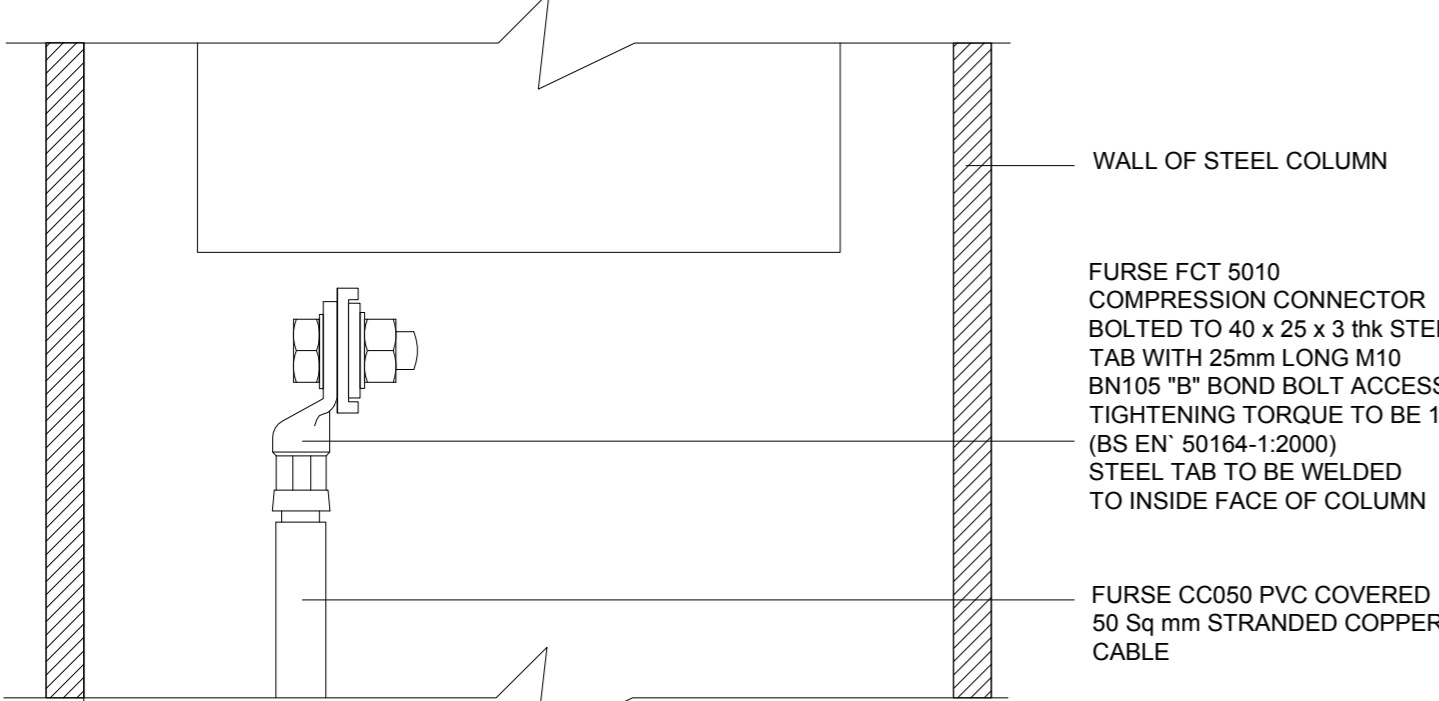
10.5mm Ø HOLE IN 40 x 25 ANCHOR PLATE

COLUMN ANCHOR ROOT DETAIL



DETAIL "D" EARTHING ANCHOR PLATE

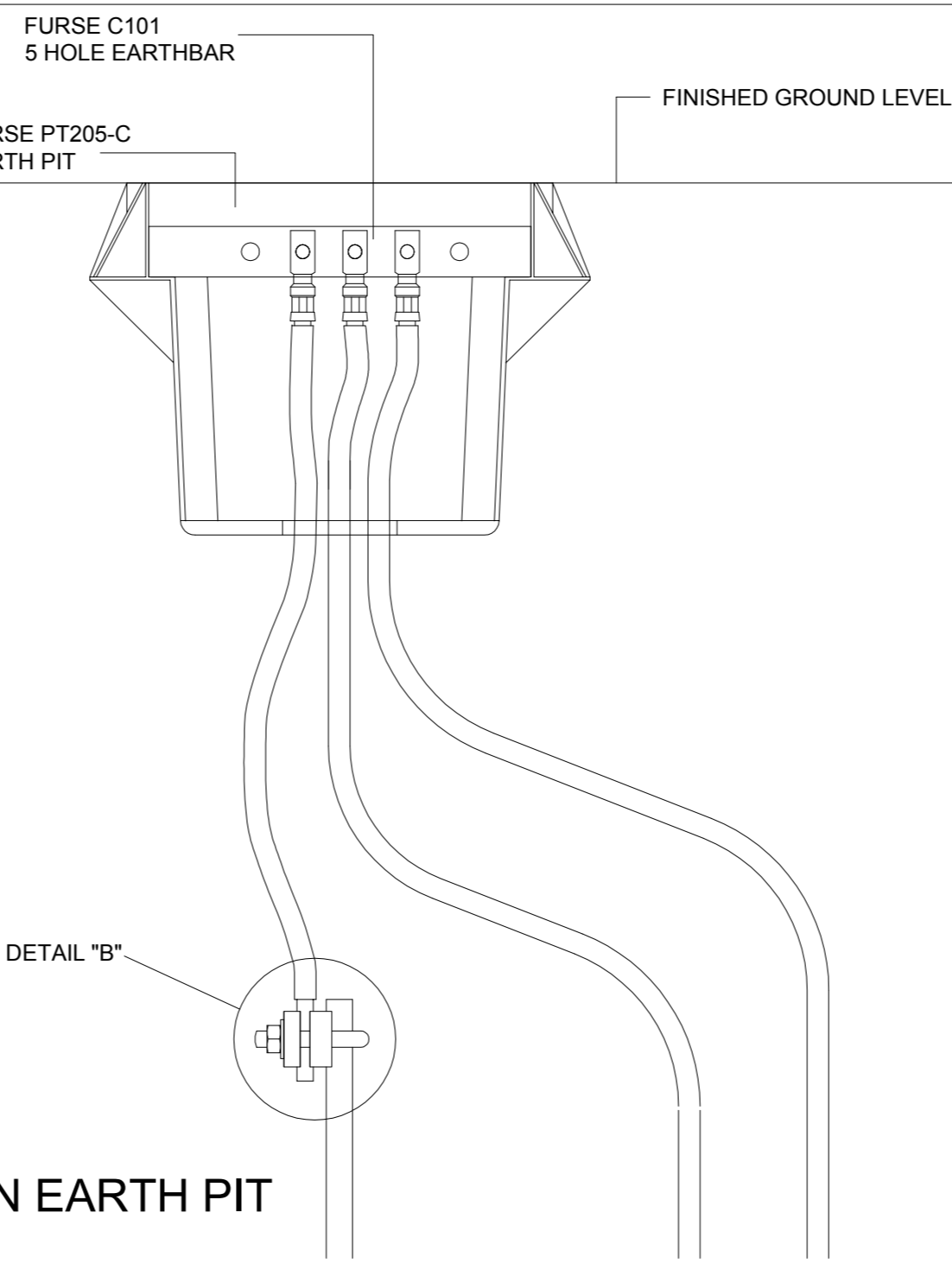
10.5mm Ø HOLE IN 40 x 25 ANCHOR PLATE



DETAIL "C" COLUMN EARTHING TAB

FURSE FCT 5010 COMPRESSION CONNECTOR BOLTED TO 40 x 25 x 3 THK STEEL TAB WITH 25mm LONG M10 BN105 "B" BOND BOLT ACCESSORY TIGHTENING TORQUE TO BE 17Nm (BS EN 50164-1:2000) STEEL TAB TO BE WELDED TO INSIDE FACE OF COLUMN

FURSE CC050 PVC COVERED 50 Sq mm STRANDED COPPER CABLE



DETAIL ON EARTH PIT

SEE DETAIL "B"

FURSE PT205-C EARTH PIT

SEE DETAIL "A"

FINISHED GROUND LEVEL

SEE DETAIL "B"

500

2400

TAPER COUPLING

16mm Ø EARTH ROD ELECTRODE

COLUMN MOUNTING BASE

CALCULATIONS AND SPECIFICATIONS FOR COLUMN BASE TO BE DETERMINED ON SITE BY STRUCTURAL ENGINEER FAMILIAR WITH LOCAL SOIL CONDITIONS

1500 Approx

1500

170

400

SEE DETAIL "C"

NOTE:
 ALL DIMENSIONS TO BE CHECKED ON SITE
 NO DIMENSIONS TO BE SCALED FROM THIS DRAWING
 THIS DRAWING IS TO BE READ IN CONJUNCTION WITH RELEVANT CONSULTANT'S DRAWINGS

NOTE
 THIS DRAWING TO BE READ IN CONJUNCTION WITH STRUCTURAL ENGINEERS DRAWING FOR CONCRETE BASE.

| REV | DATE | DESCRIPTION | CHK | DRN |
|-----|------|-------------|-----|-----|
| | | | | |

CLIENT

PROJECT

| | |
|-------------|----------|
| JOB NUMBER: | 1003 |
| DATE: | 20.04.08 |
| SCALE: | N.T.S |
| DRAWN: | K.R |
| CHECKED: | |
| STATUS: | |

| | |
|----------|----------------|
| CAD FILE | CADFILE |
| CAD REF: | CAD_REF |
| BLOCK | DRAWING NUMBER |
| ZONE | REVISION |

COPYRIGHT:

FURSE FCT 5010 COMPRESSION CONNECTOR BOLTED TO BASE PLATE WITH 45mm LONG M10 BN105 "B" BOND BOLT ACCESSORY TIGHTENING TORQUE TO BE 17Nm (BS EN 50164-1:2000)

ALL CONNECTING SURFACES (ANCHOR PLATE, FURSE CONNECTOR, NUT AND BOLT) TO BE COATED WITH OXIDE INHIBITING COMPOUND PRIOR TO CONNECTING. CONNECTION AREA SHOWN SHADED TO BE WRAPPED IN DENSO TAPE PRIOR TO CONCRETE POUR

FURSE CC050 PVC COVERED 50 Sq mm STRANDED COPPER CABLE

DETAIL "A" ANCHOR PLATE EARTHING CONNECTION